

Danger in the Air

The Parks Department jeopardizes the lives of airline passengers and parkgoers at Flushing Meadows - Corona Park by its constant neglect to maintain the towers of the New York State Pavilion and ignoring their responsibility to maintain and keep the red aviation warning light active on top of this structure.



Photo Credit: Greg Godfrey

Continued onto next page...



Photo Credit: Corinne Oats

View of Flushing Meadows showing the New York State Pavilion, the Unisphere, and, on top, Shea Stadium and the U.S. Open taken on Saturday, December 2nd, 2006 from a commercial aircraft heading above the park to La Guardia Airport.

Continued onto next page...

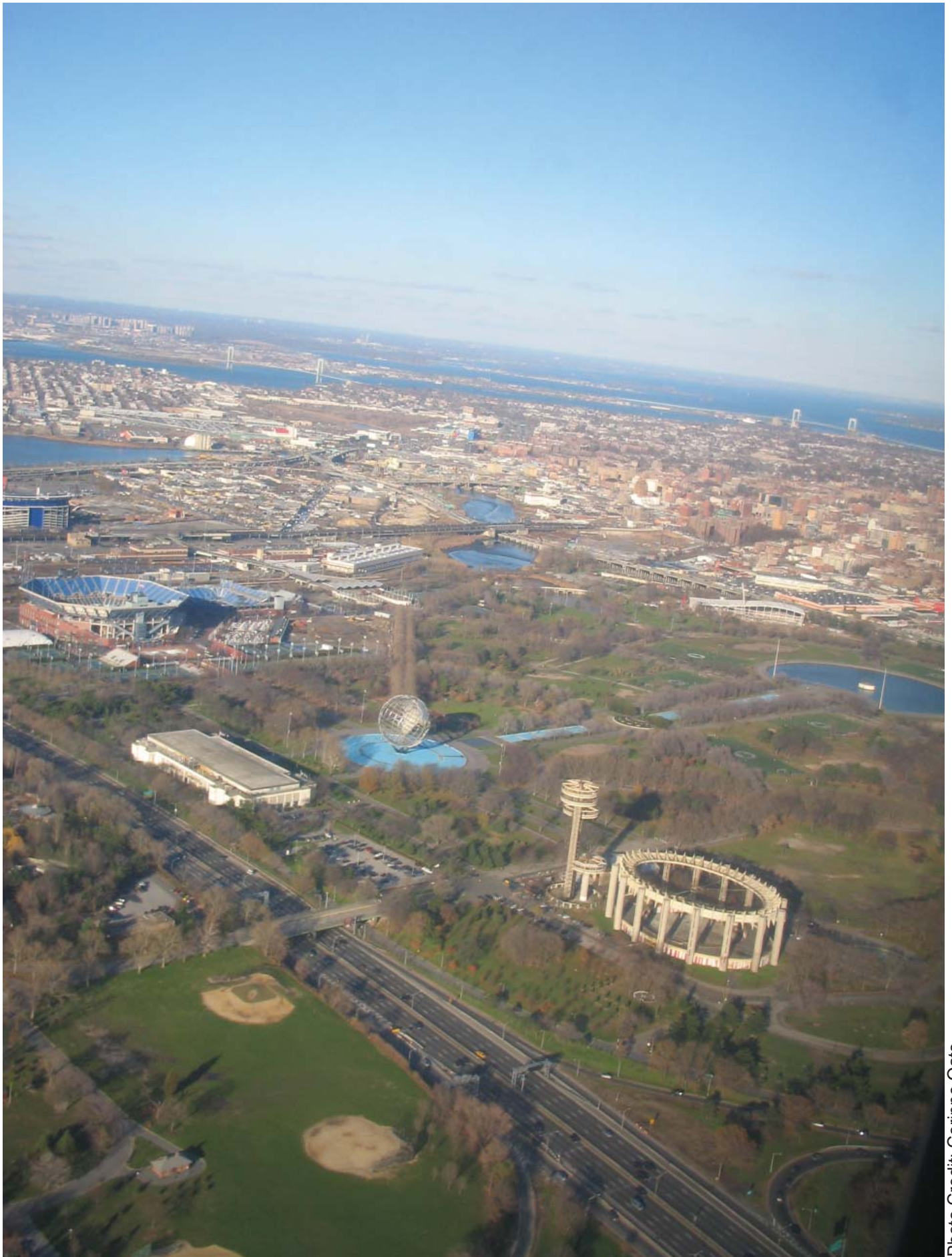


Photo Credit: Corinne Oats

View taken Saturday, December 2nd 2006 showing Flushing Meadows Park from the view of a commercial jet liner approaching La Guardia Airport.

Continued onto next page...

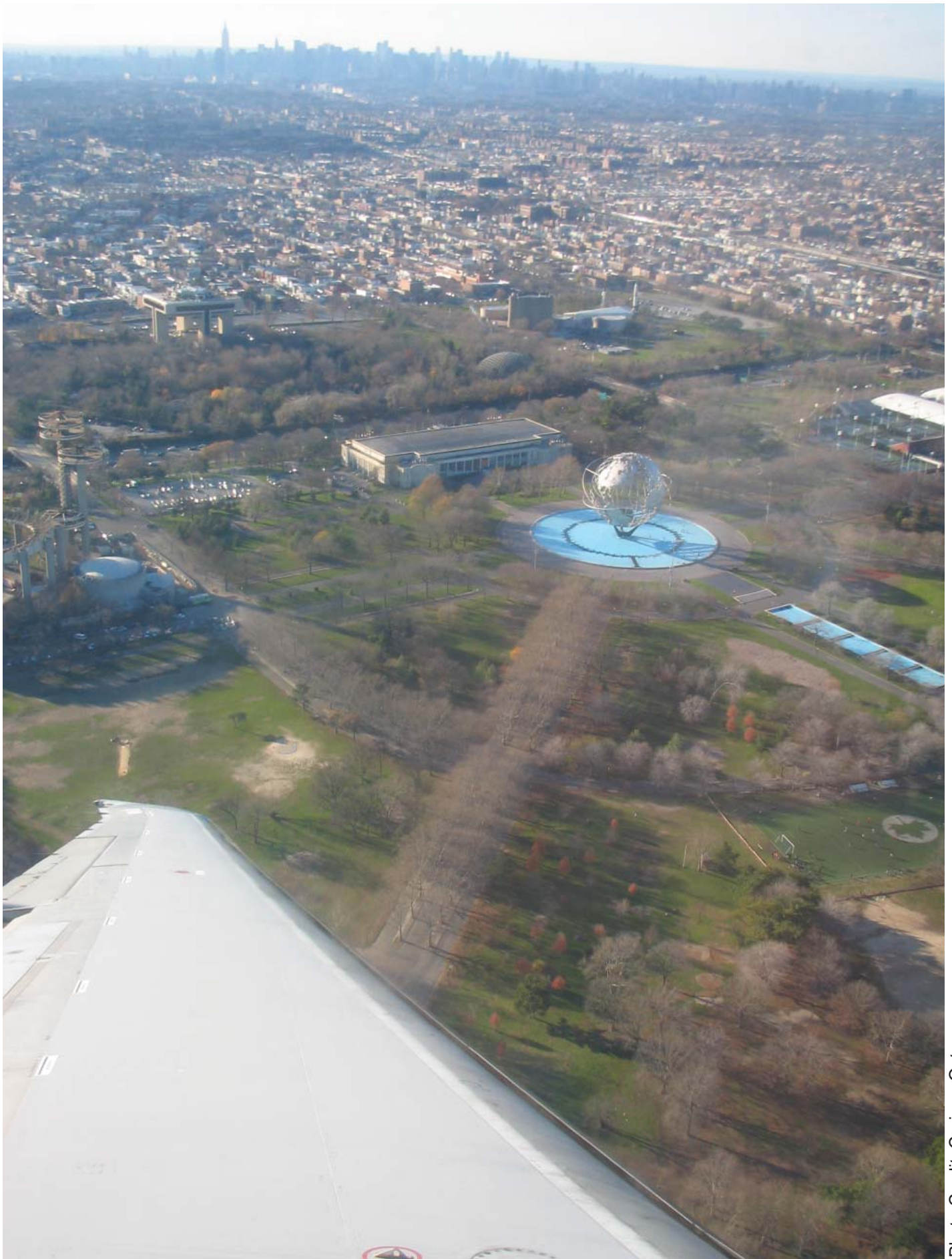


Photo Credit: Corinne Oats

Wing of the commercial jetliner on a dangerously windy day last week over the New York State Pavilion and Flushing Meadows Park.